

HYDRO MULTI-E PRESSURE BOOSTING SYSTEM



Compact, reliable and versatile booster solution
with system control redundancy

Intelligent pressure boosting system with built-in controls

Unique to the Hydro Multi-E is its lack of a conventional control unit. In this intelligent solution, control of the system lies within the pumps, which are able to communicate with each other.

Since each pump can function as the controlling unit, there is full redundancy if a sensor or pump should fail. Together with Grundfos GO, the Multi-E presents a highly reliable and versatile booster solution.

The most common application areas for the Hydro Multi-E are:

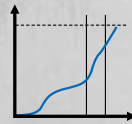
- Apartment buildings
- Hotels
- Hospitals
- Schools
- Irrigation
- Wash and clean
- Fire hydrants

Reliable and versatile with full system redundancy

See what Hydro Multi-E offers:



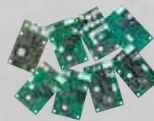
High-efficiency IE5 motors
Motors used in the Hydro Multi-E range meet IE5 efficiency standards.



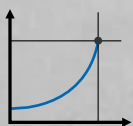
Soft pressure build-up
The pump slowly fills the pipes on start-up before ramping up speed to reach the setpoint, protecting against water hammer and damage, and reducing water leakage and noise.



Multi-Master system control redundancy
If a sensor or master pump should fail, the next pump with a sensor automatically takes over as the controlling unit. You get peace of mind with no breakdowns, increased uptime and smooth operation without the need for external controls – all settings are directly from the pump.



Communication interfaces
Integrate fully into existing BMS or SCADA systems using the Grundfos CIM interfaces, which enable data communication via open and interoperable networks and ensure one solution offering complete process monitoring and control, increasing reliability.



Proportional pressure
Proportional pressure reduces friction losses in the pipe, providing lower operation costs, less water leakage, greater comfort for the end-user and reduced energy consumption.



Remote monitoring with Grundfos GO
Grundfos GO is a comprehensive platform for mobile pump control and pump selection, where you can monitor duty points, operating hours, power consumption, speed and temperature of the pumps from the Grundfos GO Remote app on your smartphone.

Standard configuration of all systems

When you order a Hydro Multi-E pressure boosting system, the standard configuration consists of:

- IE5 motors
- Stainless steel (hygienic)
- Pre-defined pressure tank
- Primary sensor redundancy

Quick delivery is assured – only four days from order placement to shipment from the factory.



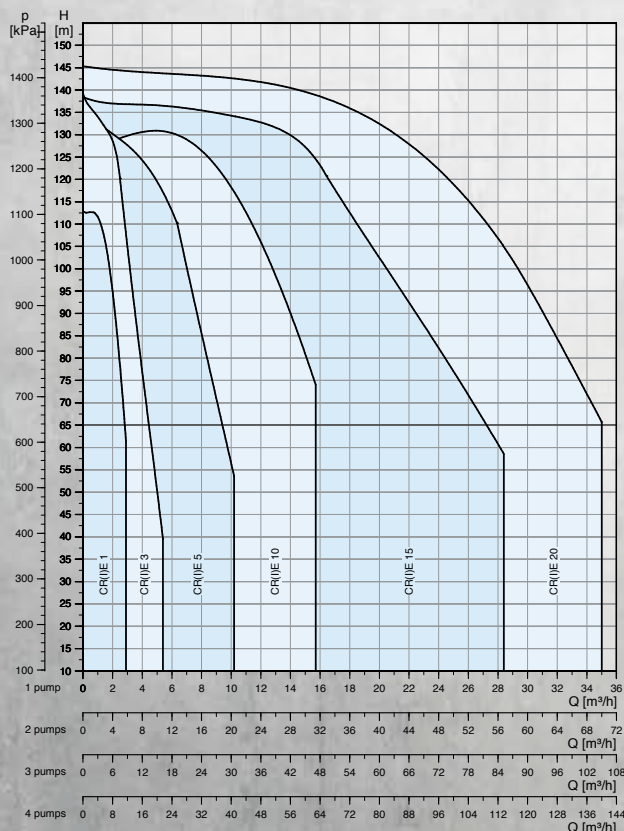
General information

Product range	2-4 pumps
Flow range	0-140m ³ /h - CRE & CRIE 0-80m ³ /h - CME
Pressure range	PN10 & PN16
Max power	4 x 11kW
Liquid temp.	0-60°C
Ambient temp.	0-50°C

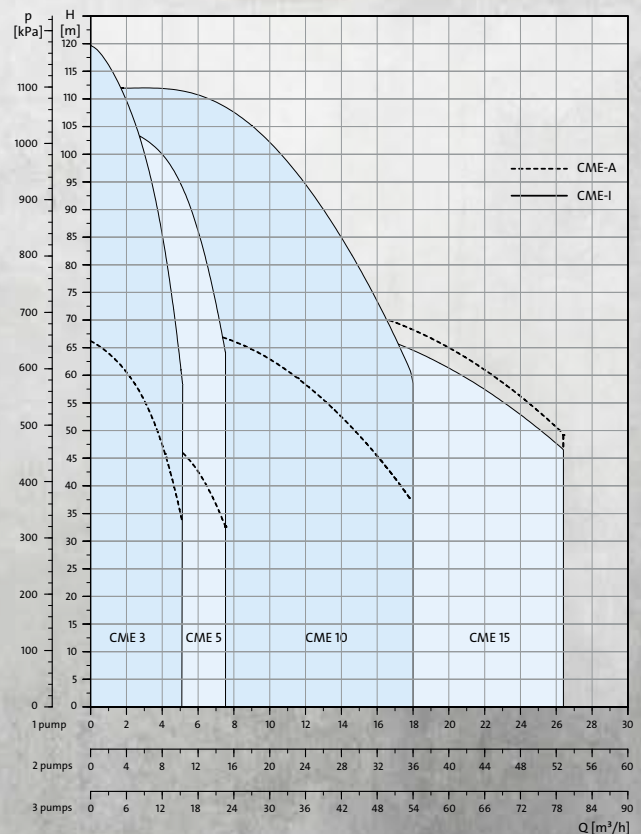
Material information

Manifold: Stainless steel EN 1.4571 / AISI 316	CRE, CRIE & CME-I
Base frame: Stainless steel EN 1.4301 / AISI 304	CRE, CRIE & CME-I
Manifold + base frame: Galvanized steel EN/DIN 1.4301/AISI 304	CME-A
Pump: Stainless steel EN/DIN 1.4301/AISI 304	CRIE & CME-I
Pump: Cast iron (Wetted parts are Stainless steel)	CRE & CME-A

Performance curve: HYDRO MULTI-E, CRE/CRIE



Performance curve: HYDRO MULTI-E, CME



Visit the Grundfos Product Centre online and get access to sizing tools and a full overview of all products, specifications, and application areas. Go to product-selection.grundfos.com



About Grundfos

Grundfos is a global water technology company committed to pioneering solutions to the world's water and climate challenges and improving the quality of life for people. Grundfos was founded in 1945 and is today one of the world's leading providers of pump solutions with annual production standing at more than 17 million units and over 19,000 employees.

For the vastly different requirements in commercial buildings, Grundfos offers a complete range of pumping solutions that ensure optimal comfort and safety in any application while providing cutting-edge energy efficiency. When you buy from Grundfos, you get a user-friendly and reliable solution from a full-line supplier that offers improved CAPEX & OPEX and, ultimately, peace of mind for your operations.